

# News from The Station Ltd

## Sprint & Summer 2022/23

The Station is open from 730am to 4.00pm Monday to Friday.  
Saturday and Sunday is open from 7:30 am to 2:00pm.

Our main goal is to provide case management for those in need of housing, mental health concerns, drug and alcohol support, referrals and advocacy. Clients can grab a meal, watch the morning news, grab a book to read and use the computers, to check their emails.

Breakfast is from 7:30am to 9:00am. Lunch is served from 12:00 to 12:30pm  
Monday to Sunday

The Station's Christmas Lunch was on Friday the 23rd December. We had more than 100 people come to visit us to celebrate Christmas. Everyone who attended got a meal, a gift and enjoyed catching up with their friends.

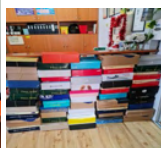


### The Station Limited are grateful for the donations we receive

#### **Columbus Capital**



#### **ShoeBox Revolution Sydney**



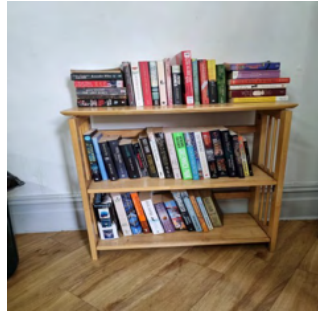
#### **Sydney Basket Brigade**



#### **Bigsley Work Wear**



### Books donated from Jamie from The White Star Project



## Legal Service

The Homeless Persons Legal Service continues with their pro-bono service once a week, Tuesdays at 12.00 pm.

If you would like to speak to a lawyer and get some advice, you can come by and speak to staff about contacting the homeless persons legal service.

This is Glenn our Client Representative and Volunteer.



Welcome Javier, our new cook



### Did you get a fine during covid restriction lockdowns and paid it?

Talk to staff or The Homeless Persons Legal service on Tuesdays or Contact Revenue NSW on 1300 138 118 to find out the status of that fine and if you are eligible for a refund.

## Health Team at The Station

The Health Clinic is run by the St. Vincent's Hospital Homeless Health Team. The team includes a GP & a Nurse who visit The Station from 12:00pm to 1:00pm Mondays only.

Any medical concerns, flu vaccines and Covid-19 Vaccination information and other health information will be provided face to face.

Anyone can talk to the Health team with out an appointment, and without a Medicare card.

## Dental Care Program

Dental Program continues bringing good results. With the assistance of ADA and the Bellevue Hill private clinic, a client has recently obtained her dentures and her smile has been complemented many times.

**40 Clients have been assisted throughout this program during the past 6 months.**

If you need dental care assistance ask to see Franco he can arrange an appointment to be assisted by filling out a form and make an appointment for a dental care visit.

## Mental Health Clinic

If you have any concerns about your mental health and want to speak to a mental health psychiatrist doctor or a nurse you may arrange an appointment through our mental health worker, Martina.

The above mentioned specialists are available Wednesdays from 11:30am to 1:00 pm by appointment only.

## Covid-19 Update

The Station Ltd continues to support clients to engage with services and navigate the spread of covid 19 variants.

### If you need to get a covid test?

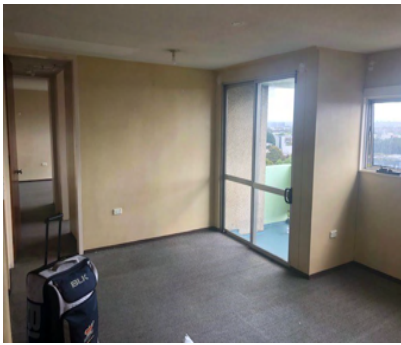
The nearest place to get a covid test would be at The Sydney Eye Hospital next to Parliament House. 8 Macquarie St, Sydney Phone: 9382 7111

**You can also pick-up an Antigen Test at the Station**

**You can receive your first, second and booster Covid vaccine shot at the :**

Local pharmacies,  
The Priceline Pharmacy, up the road  
or your Doctor.





**This is  
Marks  
new home**

*Our Housing Support team have assisted clients with finding places to call home*



**This is  
Michaels  
new  
home**

## Housing Support Assistance

The Housing Support Workers, Franco & Morteza can help you to navigate the housing system, providing case management to assist and support with housing applications.

**27 Clients have been housed in the past 6 months.**

Anyone needing assistance with looking for long term accommodation make an appointment to see our Housing Support Workers.

## Mental health, Alcohol & Other Drugs

If you are struggling with issues related to mental health, alcohol and other drugs, please see our AOD Workers Martina or Graciela who can provide support, information and referrals to Detox and Rehab services.

We can also assist you to find a psychologist or counsellor in the community.

### Donations continued -

**Norwegian Cruise  
Line Holdings Ltd.**



**Rotary Club**



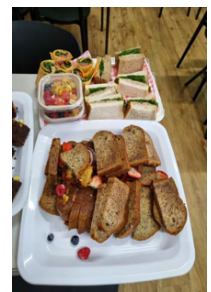
**Work Sight Solutions**



**Pfizer**



**Dexus Group**



## Thanks to our Stakeholders

St. Vincent's Hospital Homeless Health Team,  
The Australian Dental Association and the  
Homeless Persons Legal Services for their  
continued support.



From the Board of Directors, Clients and Staff at the  
Station Ltd we thank you for your ongoing support.

**Merry Christmas and a Happy New Year from the  
team at The Station Limited**



## Thank you to all our supporters who made contributions through out the year.

*Rotary Club of Sydney Darling Harbour*

*Sarah Searle (Donations Organizer)*

*AMA HOSPITALITY GROUP (Peter Brewty)*

*Katryna Robinson (Every Little Bit Helps)*

*Dexus Group*

*Flow & Glow*

*Resimac*

*Bakers Delight*

*Ross McDonald/ Scot Menzies*

*StatePlus*

*First State Super*

*City Club Group*

*Cheryl Coleman*

*Anna M. Parissi*

*State Super*

*The Business Community in Wynyard*

*ShoeBox Revolution - Lisa Davis*

*InfoTrust*

*Pfizer Australia*

*John Beckhaus*

*PayPal*

*Aware Superannuation*

*I care Group*

*Sydney Basket Brigade*

*Scott Cadman and Team from Norwegian  
Cruise Line Holdings Ltd.*

*Work Sight*

*Practical Work Force Solutions*